



iFIX 5.9 from GE Digital

Driving decision support for operators with high-performance visualization

Fourth-generation HMI/SCADA increases efficiency and reduces costs

With just a glance, operators should be able to recognize which information requires their attention and what action needs to be taken. They need to know quickly what problems have arisen and how they can be addressed efficiently.

You can enable smart operators with new fourth-generation HMI/SCADA. The new [iFIX 5.9 from GE Digital](#) leverages the latest technologies that help deliver faster time to insight and greater efficiency for your operations while speeding time-to-insight for system integrators.

iFIX 5.9 offers a new graphical engine to modernize your HMI/SCADA experience. Get an intuitive user experience to reduce execution errors and improve operator response time to events and incidents. This new generation of software combines proven HMI/SCADA capabilities—used by thousands of organizations around the globe—with new advanced features to deliver best-in-class results.

Outcomes

- Speed response with modern screens based on a powerful, new graphical engine
- Reduce troubleshooting time with higher situational awareness, using efficient HMI layouts and context-driven navigation based on a model structure
- Enable action anywhere, anytime with native responsive web design
- Minimize maintenance time and costs with zero deployment clients
- Improve change management efficiency with centralized development and deployment
- Enable superior design flexibility for consumption of third-party HTML5 content



01 Speed operator response with modern screens that facilitate situational awareness

iFIX 5.9 provides a new graphical engine that modernizes your HMI/SCADA. Take advantage of a completely refreshed Workspace with features that include anti-aliasing for picture shapes, time lapse playback for historical data, updated ribbon bars and menu options, high performance graphics, and more.

02 Find information easily with a context-rich HMI based on the model structure

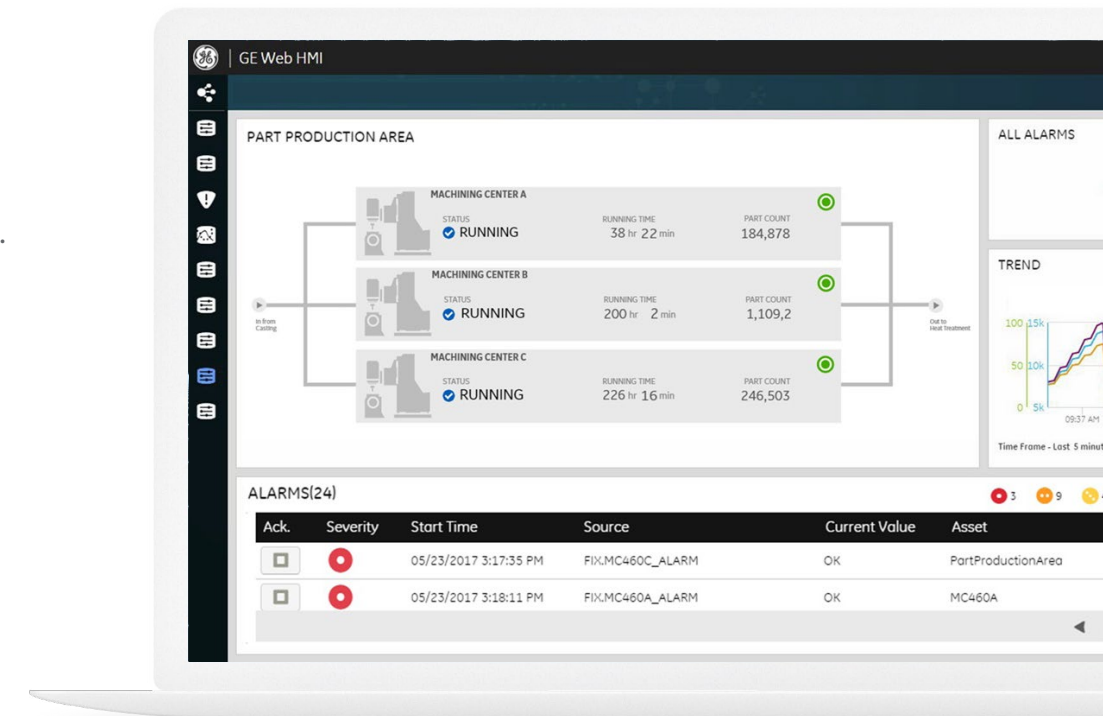
This context-rich HMI changes as the user moves through the system. Navigation is derived from the model structure built by the engineer. The context follows the asset definition and is defined only once for a class of assets. This prescribed experience provides the operator with the most relevant information—in context—and minimizes the effort to find it.

03 Reduce time to solution with Efficient HMI out of the box

To help engineers create the right user experience, iFIX 5.9 contains pre-defined objects and templates designed using Efficient HMI concepts. Effective layouts are also available out of the box. Designing your HMI has never been so easy, speeding time to solution and maintenance. Additionally, iFIX 5.9 introduces a unique concept of flexible assembly of graphical content using external HTML5 editors.

04 Achieve visualization where you need it with native responsive web design

The HTML5 user interface produced using iFIX 5.9 offers native Web out of the box and supports responsive design concepts. The displays support multi-touch and can scale to adapt to various form factors and orientations where the HMI will be viewed, from small to large high resolution screens.



Designed to the Efficient HMI guidelines, iFIX 5.9 improves operator decision making and speeds response.

05 Save time with zero deployment clients with centralized management

iFIX 5.9 is a true native web HMI. Web clients do not require any client side installation. The configuration, development, and deployment are all centralized, and any updates or changes are automatically reflected on the clients. The clients can be initiated through a browser or kiosk session and always start with the latest software updates deployed on the server.

"iFIX is the easiest way to hook to a variety of things ... We haven't found anything that iFIX couldn't overcome."

**John Franklin, Logic Systems Administrator,
Arizona Electric Power Cooperative**

iFIX 5.9 from GE Digital

Driving decision support for operators with high-performance visualization



Features

- Anti-aliasing/picture property SmoothShapes improve picture quality
- Time lapse playback added to Global Time Control
- High performance Dynamos and other features at your fingertips for Efficient HMI
- Office 2016 themes and updated ribbon bars
- Never start with a blank sheet of paper, improve efficiency by starting with a model
- Native Web HMI
- Structured asset model mapped to the SCADA database
- HTML5 object library for a more efficient HMI and HTML5 content generation from the workspace
- Base API to consume external HTML5 content
- Standard layouts and cards on topics such as trends, alarms, KPIs, and more
- Multi-touch alarm and trend viewer
- Local, remote over LAN, WAN, or Internet connections, including VPN
- Encrypted communication from your Web client using SSL / digital certificate, IT security friendly, and cloud ready

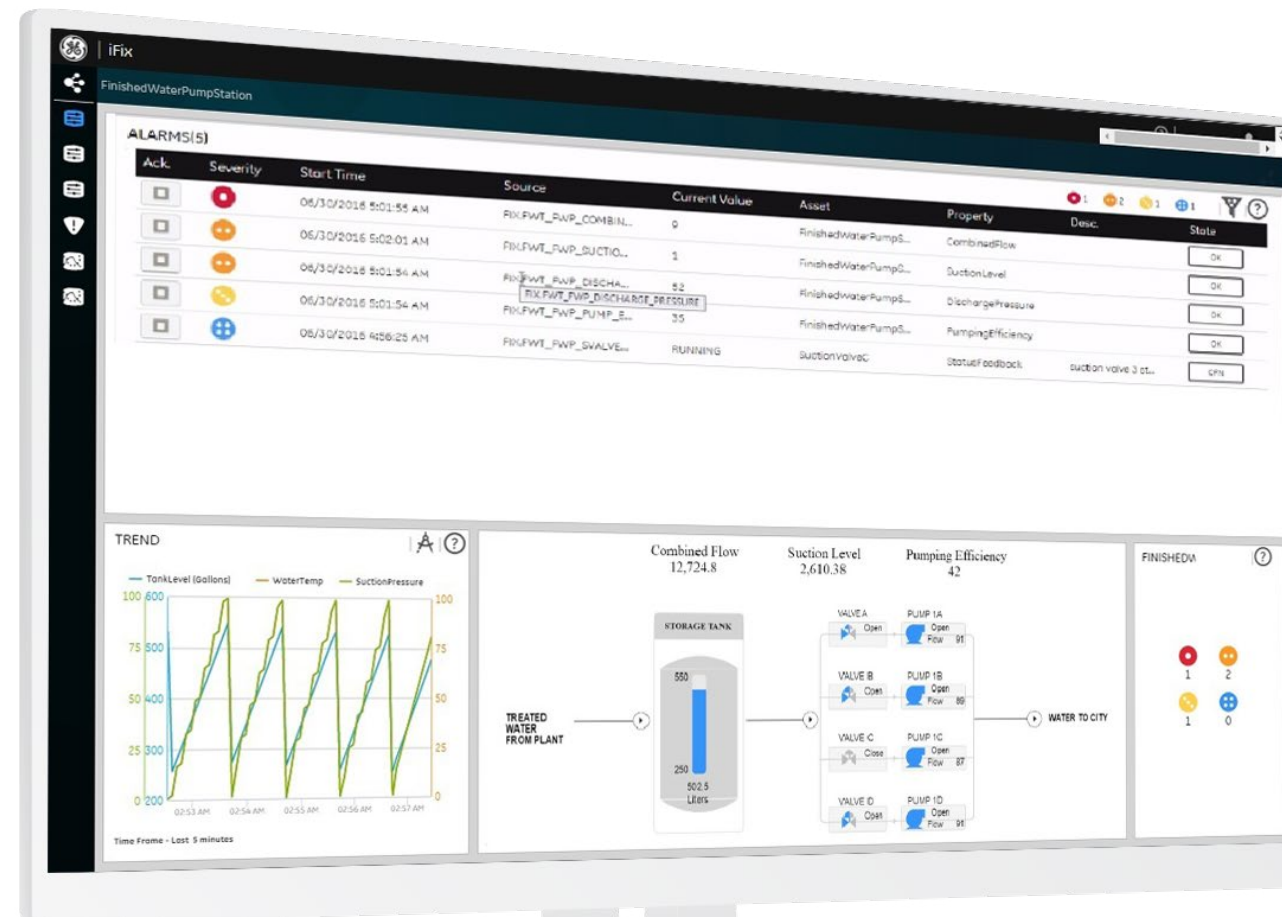
Hardware requirements

- A 2.0 GHz Intel Core2 Duo Processor or better computer. For better performance, GE Digital recommends a minimum 3 GHz computer with 4 GB memory or better is needed. Be aware that the computer must be at least dual core; a single core is not supported (with or without hyper-threading).
- A minimum of 2 GB RAM. For better performance, please consider using more.
- A minimum of 10 GB of free hard drive space for iFIX pictures, databases, alarm files, and other data files.

Software requirements

- Qualified HTML5 browsers
- One of the following operating systems:
 - Microsoft Windows 10
 - Microsoft Windows Embedded Standard 7
 - Microsoft Windows 8.1 (32-bit or 64-bit)
 - Microsoft Windows 7 (32-bit or 64-bit)
 - Microsoft Windows Server 2016
 - Microsoft Windows Server 2012 R2
 - Microsoft Windows Server 2008 R2
- Network interface software for TCP/IP network communication and certain I/O drivers.
- An I/O driver for SCADA servers. GE Digital supplies I/O drivers for many programmable controllers.

Hardware and software requirements are representative and may vary by customer deployment. Please consult the product documentation for more details.



Today's SCADA is not just monitoring and visualization with alarms rolling in. iFIX 5.9 can optimize your operations for active decision support—enabling your team to achieve critical business outcomes.

LEARN MORE

Each window of the layout provides a different, interchangeable perspective, or view, on the displayed asset to deliver a personalized experience.



iFIX 5.9 from GE Digital

Driving decision support for operators with high-performance visualization

Services

In the world of Industrial Internet of Things (IIoT), organizations are able to optimize productivity, reduce costs, and achieve Operational Excellence. While this is an exciting time for opportunity and growth, it can also bring on new challenges, questions, and uncertainty. No matter where you are on your IIoT journey, GE Digital has the right services offering for you.

Advisory Services We can help you plan and start your IIoT journey in a way that aligns to your specific business outcomes.

Managed Services We can help you maintain your critical machines from one of our remote locations around the world using model-based predictive-analytic technology.

Implementation Services Our experienced global Automation partners can implement a collaborative, multi-generational program that marries your existing investments to the right enhancements and technology.

Education Services We specialize in education services to ensure that you're leveraging our solutions to the fullest extent with our training and certificate programs.

GlobalCare Support Services Let us help by ensuring that your business continues to operate at its highest efficiency, all while mitigating risks to your investments.

Cyber Security Services Our solutions provide industrial-grade security for a wide range of OT network and application topologies.

Related products

GE Digital's [HMI and SCADA](#) suite helps you precisely monitor, control, and visualize every aspect of your operations, enabling operators to make the best decisions faster.



[Workflow](#) →

Guide operators with dynamic, interactive electronic work instructions and eSOPs for more consistent operations and optimized processes.

[Mobile](#) →

Take industrial automation to a new level, transforming operational data into actionable information, accessible anywhere, anytime.

[Predix](#) →

Innovate and transform your business with the cloud-based operating system for the Industrial Internet, purpose-built for industry.

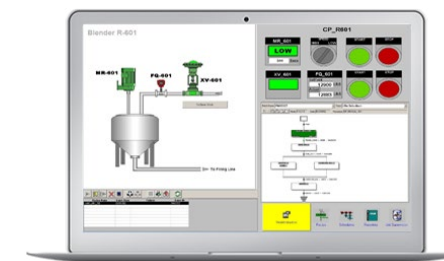
Continue your IIoT journey

Transforming your business requires innovative foundational solutions that lay the groundwork for optimized performance.



[Cyber Security for OT](#) →

Take the right actions to increase resilience, help ensure safety, and maintain availability across your operational technology (OT) environment.



[Batch Execution](#) →

Does your process need a recipe for consistent success? With Batch Execution, gain the security, flexibility, and ease of use you need to reduce costs, increase quality, and boost profitability.



[Historian](#) →

Optimize asset and plant performance through time-series industrial data collection and aggregation, leveraging Predix IIoT connectivity.

PREDIX

About GE

GE (NYSE: GE) is the world's Digital Industrial Company, transforming industry with software-defined machines and solutions that are connected, responsive and predictive. GE is organized around a global exchange of knowledge, the "GE Store," through which each business shares and accesses the same technology, markets, structure and intellect. Each invention further fuels innovation and application across our industrial sectors. With people, services, technology and scale, GE delivers better outcomes for customers by speaking the language of industry.

©2016 General Electric. All rights reserved. *Trademark of General Electric. All other brands or names are property of their respective holders. Specifications are subject to change without notice. 07 2017

Contact

Americas: 1-855-YOUR1GE (1-855-968-7143)
gedigital@ge.com
www.ge.com/digital