

# Proficy Scheduler

- Powered by ROB-EX

## Finite Capacity Scheduling at your fingertips

Delivering results for a sustainable competitive advantage

- Reduce order lead time by up to 30%
- Improve plant operational efficiency by up to 20%
- Decrease time spent on planning activities by up to 50%
- Dramatically reduce response time for handling variation in production
- Respond quickly and accurately to order-related customer inquiries
- Detect and avoid bottlenecks and materials shortages in advance

Proficy\* Scheduler – powered by ROB-EX is an interactive, visual tool from GE Intelligent Platforms that helps planners create and maintain more dynamic and effective production schedules based on resources and asset capacity. It enables quick, informed decision making with an integrated view of the plan and resources across the plant, which allows users to optimize and balance the impact of schedule changes on resources and delivery times.

### Share and Work Simultaneously

Proficy Scheduler operates as a stand-alone system or fully integrated with Enterprise Resource Planning (ERP) and/or Manufacturing Execution Systems (MES) such as Proficy Plant Applications. It allows several users to share and work simultaneously in the same production plan, supporting departmental coordination and multi-site planning.

### Benefits of Real-Time Planning

- A clear overview of current production orders
- Efficient planning of new orders and rescheduling of planned orders
- Simulation of the load factors when activities are changed
- Accurate, timely information on capacity, work load, bottlenecks and due-date compliance
- Faster decisions based on better, more accurate information

### Powerful, Dynamic Planning

Proficy Scheduler empowers you to simulate the consequences of the seemingly continuous changes that impact production such as:

- Changing date and time for the start or delivery of a production order
- Adding new orders to the plan
- Changing the planned quantity of an order
- Variations in processing speed

### Easy Editing

Proficy Scheduler presents and edits the production plan graphically, with dynamic displays of the results and impact of changes. Editing the schedule is easy and can be done manually or automatically.

### Dedicated and Flexible

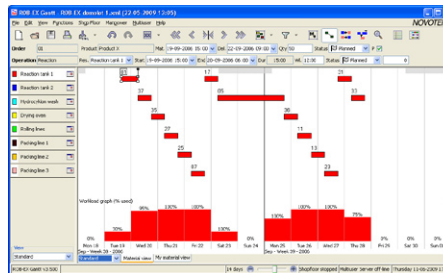
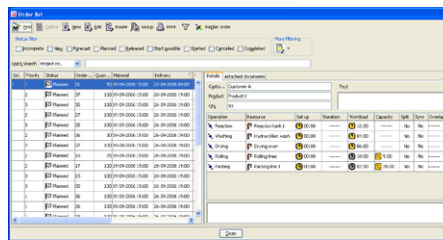
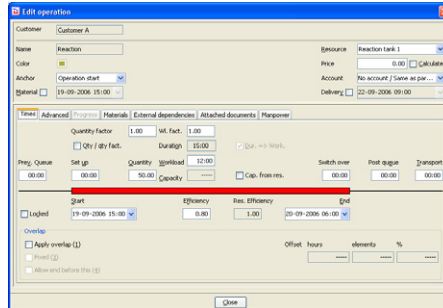
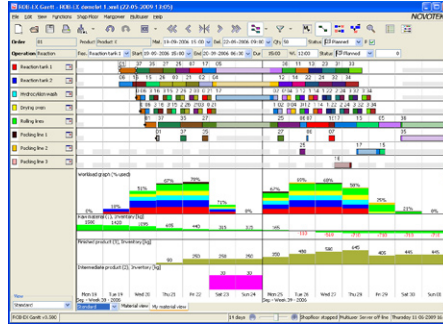
By offering specialized modules, Proficy Scheduler solves planning tasks in discrete, project and semi-process oriented production environments. The product is flexible – with easy-to-use tools to define equipment/personnel resources, primary and secondary resource capacity calendars, and product routings – and configurable to meet the needs of manufacturers of varying types and sizes.



# Proficy Scheduler

## Finite Capacity Scheduling Features

- Interactive graphical planning tool
- Primary and secondary resource capacity calendars
- Finite capacity resources
- Product routings
- Hierarchical activity definition
- Activity scheduling
- Workload on machines and staff
- Bill-of-material and inventory
- "What-if" simulations
- Real-time displays for visibility across the plant
- Integration with ERP and MES



## Proficy Scheduler – powered by ROB-EX



Proficy Scheduler provides visual interaction and rule management that enable planners to better leverage their knowledge to quickly create and adjust production schedules.

While useful as a stand-alone planning tool, combining Proficy Scheduler with Proficy Plant Applications creates a powerful tandem, integrating real-time tracking of actual production, consumption and events with their impact on schedule adherence.

For more information, please visit the GE Intelligent Platforms Operations Management Software web site at:

[www.ge-ip.com/operationsmanagement](http://www.ge-ip.com/operationsmanagement)

### GE Intelligent Platforms Information Centers

Headquarters:  
1 800 433 2682  
1 800 322 3616  
1 434 978 5100

Global Regional phone numbers are available on our web site [www.ge-ip.com](http://www.ge-ip.com)

### Additional Resources

For more information, please visit the GE Intelligent Platforms web site at:

[www.ge-ip.com](http://www.ge-ip.com)

