



Batch Execution from GE Digital

Driving business forward with a proven, scalable, and flexible solution

Deliver unprecedented insights into your operations

Batch Execution from GE Digital is one of the most powerful and feature-rich batch automation solutions on the market today. The software features a fully graphical and straightforward application development environment, empowering engineers to quickly and efficiently deploy batch automation, regardless of the underlying equipment.

The solution also includes data collection, robust batch management, clear process visualization, and powerful supervisory control capabilities—enabling a complete batch solution for small, medium, large, or multi-site applications.

01 Powerful and easy real-time control

Batch Execution helps you efficiently control batches and monitor the execution performance of batches in real time. Using the Batch Client applications, operators can take control of complex processes with ease.

Outcomes

- Reduce waste and increase product quality
- Increase efficiency
- Enable fast deployment with lower total cost of ownership
- Drive quicker time-to-market with enhanced information management capabilities

02 Smarter and faster development

The software solution delivers a fast, simple, and effective batch development platform, which allows you to model your plant floor equipment, add equipment paths, equipment priority and status, and create and manage reusable recipe components, all using the S88.01 models.

03 Improved security and compliance

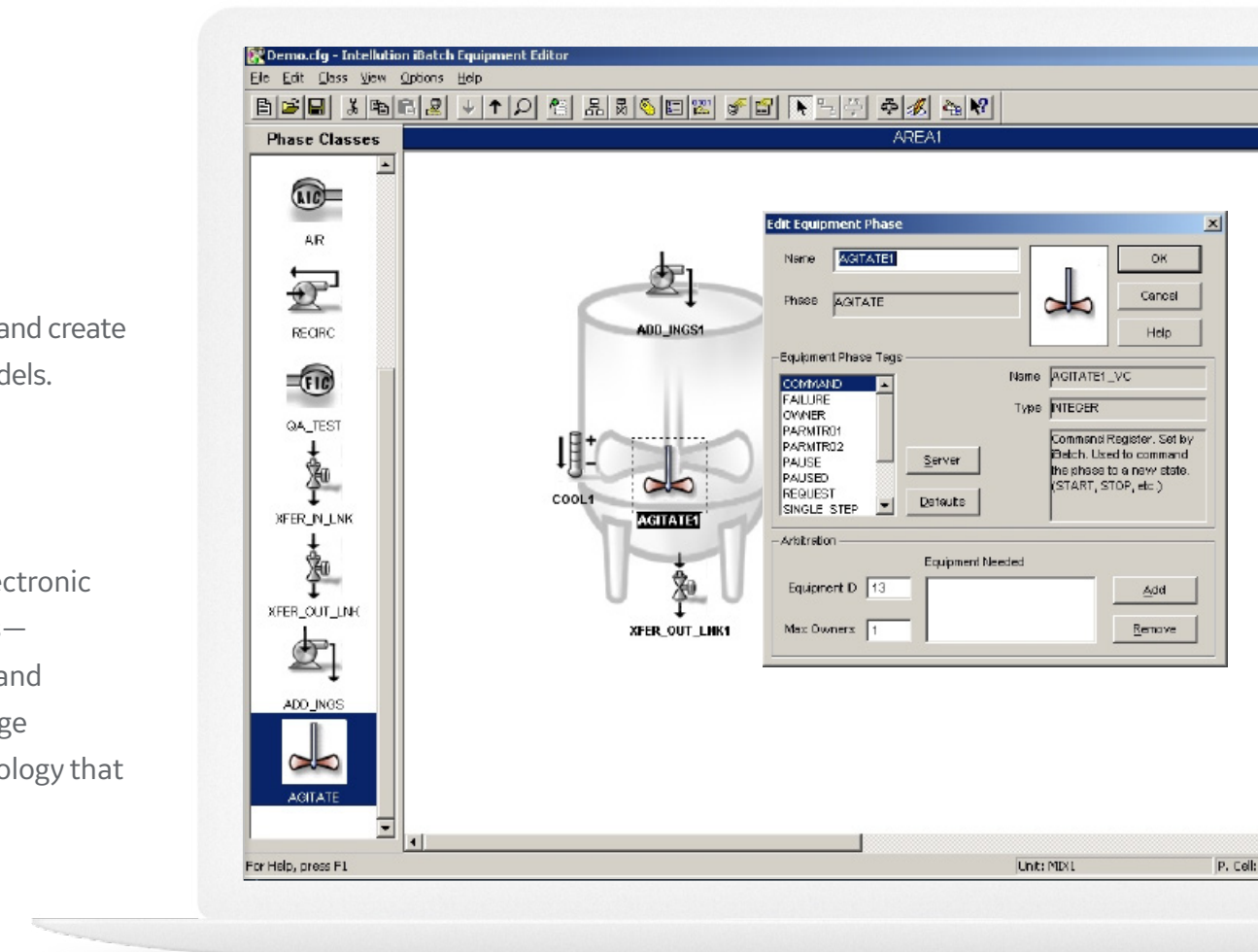
Batch Execution delivers point-of-entry verification through Electronic Signatures in the active controls and Recipe/Equipment editors—supporting 21 CFR Part 11 compliance by enabling equipment and recipe auditing and version control. It also centralizes the storage location for e-records with encrypted store-and-forward technology that automatically provides a runtime and configuration audit trail.

04 Open and layered solution

Batch Execution seamlessly integrates with any OPC-compliant HMI/SCADA, PLC-based or DCS system, allowing OPC browsing to establish connection and automatic creation of tags.

05 Helping you find the "golden batch"

You can extend the power of Batch Execution using Batch Analysis from GE Digital. This optional capability provides manufacturers with the ability to optimize batch production, utilizing time series and historical analysis tools. The results used in conjunction with Formulation Management enable consistent reproduction of the "golden batch."



Batch Execution leverages an open-system design to protect your current and future investments.

Through a robust set of tools, open architecture, and an easy-to-use graphical interface, Batch Execution can help you create a more efficient and consistent production environment.



Batch Execution from GE Digital

Driving business forward with a proven, scalable, and flexible solution

Features

- ISA S88.01 Compliant System provides a standard structure for your plant floor, simplifying the development of batch systems.
- IEC 61131-3 Sequential Function Chart programming language provides a simple graphical language for developing procedure flow in recipes.
- Formulation Management allows engineers to reuse validated recipe procedures with predefined parameter sets.
- Campaign Management simplifies the operator experience of fulfilling large process orders by accepting a process order and scheduling a list of batches.
- Transition Breakpoints allow engineers to define temporary pause points in executing batches.

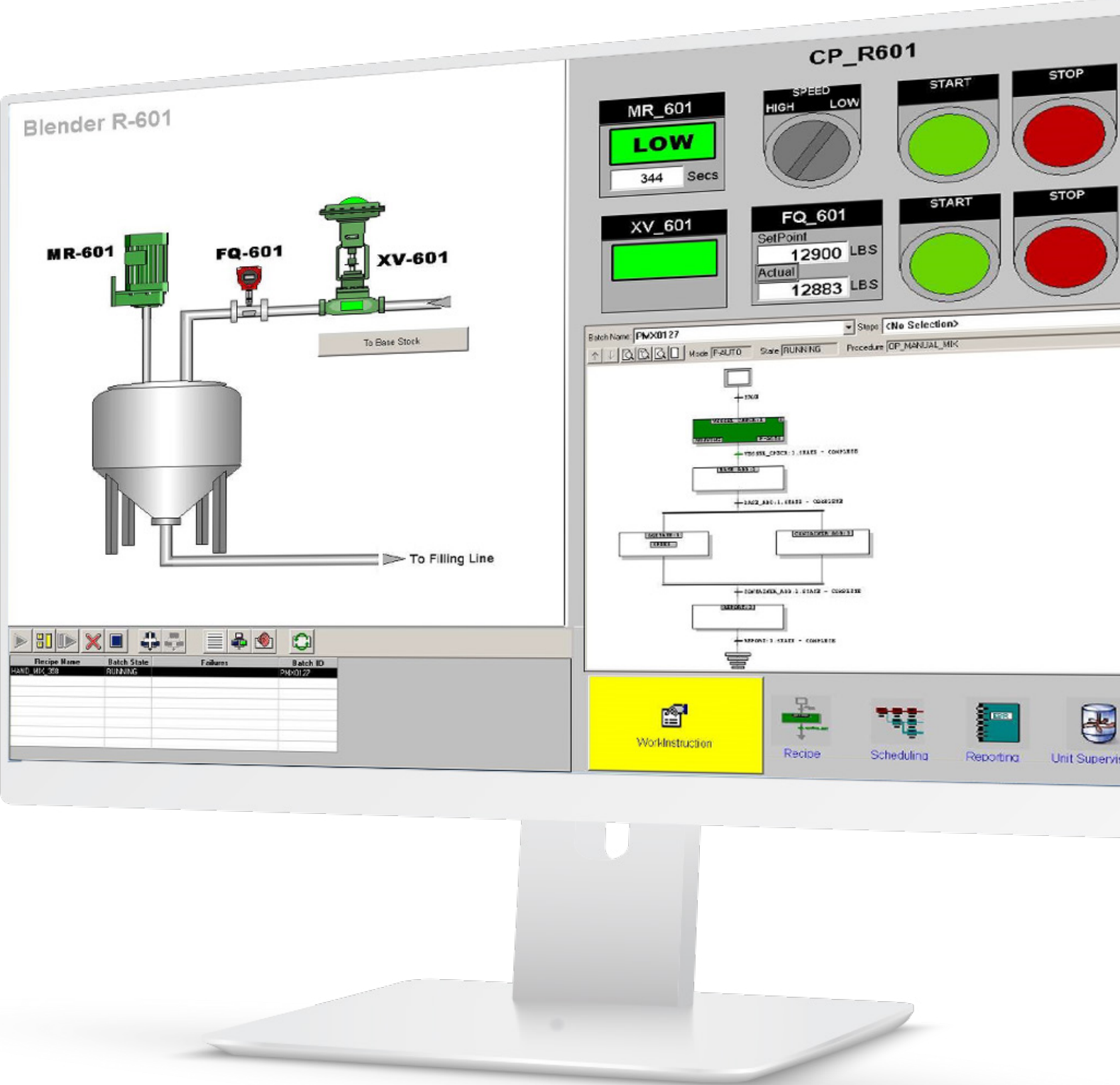
Software requirements

- Windows 7, 8, or 10
- Windows 2003, 2008, or 2012 Server
- Windows Vista Professional
- Windows XP SP1 or higher

*This offer is subject to change.

Improve your process with the proven capabilities in Batch Execution and iFIX from GE Digital. With efficient batch control and real-time monitoring, you can reduce waste and increase product consistency.

LEARN MORE





Batch Execution from GE Digital

Driving business forward with a proven, scalable, and flexible solution

Services

In the world of Industrial Internet of Things (IIoT), organizations are able to optimize productivity, reduce costs, and achieve Operational Excellence. While this is an exciting time for opportunity and growth, it can also bring on new challenges, questions, and uncertainty. No matter where you are on your IIoT journey, GE Digital has the right services offering for you.

Advisory Services We can help you plan and start your IIoT journey in a way that aligns to your specific business outcomes.

Managed Services We can help you maintain your critical machines from one of our remote locations around the world using model-based predictive-analytic technology.

Implementation Services Our experienced global Automation partners can implement a collaborative, multi-generational program that marries your existing investments to the right enhancements and technology.

Education Services We specialize in education services to ensure that you're leveraging our solutions to the fullest extent with our training and certificate programs.

GlobalCare Support Services Let us help by ensuring that your business continues to operate at its highest efficiency, all while mitigating risks to your investments.

Worldtech Security Services Our solutions provide industrial-grade security for a wide range of OT network and application topologies.

Related products

GE Digital's [HMI and SCADA](#) helps you precisely monitor, control, and visualize every aspect of your operations, enabling operators to make the best decisions faster.



PREDIX

[iFIX](#) →

Gain visibility into your operations and secure agility for smarter decision making that drives results.

[Plant Applications' Batch Analysis](#) →

Maximize overall equipment effectiveness (OEE), improve production scheduling, and ensure product quality by leveraging real-time production data.

[Predix](#) →

Innovate and transform your business with the cloud-based operating system for the Industrial Internet, purpose-built for industry.

Continue your IIoT journey

Transforming your business requires innovative foundational solutions that lay the groundwork for optimized performance.



[Historian](#) →

Optimize asset and plant performance through time-series industrial data collection and aggregation, leveraging Predix IIoT connectivity.



[Workflow](#) →

Guide operators with dynamic, interactive electronic work instructions and eSOPs for more consistent operations and optimized processes.



[Mobile](#) →

Take industrial automation to a new level, transforming operational data into actionable information, accessible anywhere, anytime.

About GE

GE (NYSE: GE) is the world's Digital Industrial Company, transforming industry with software-defined machines and solutions that are connected, responsive and predictive. GE is organized around a global exchange of knowledge, the "GE Store," through which each business shares and accesses the same technology, markets, structure and intellect. Each invention further fuels innovation and application across our industrial sectors. With people, services, technology and scale, GE delivers better outcomes for customers by speaking the language of industry.

©2016 General Electric. All rights reserved. *Trademark of General Electric. All other brands or names are property of their respective holders. Specifications are subject to change without notice. 10 2016

Contact

Americas: 1-855-YOUR1GE (1-855-968-7143)
gedigital@ge.com
www.ge.com/digital